



WILIER SLR

TECHNICAL INTRODUCTION
REV.01

FILANTE^{SLR}

2

WILIERPEDIA 2021

ROAD COLLECTION

The natural evolution of Cento10PRO, our high-end aerodynamic bike used by professionals. Filante SLR is an extremely lightweight aerodynamic bicycle with a significantly improved stiffness to weight ratio. We used the same materials and technology as in the construction of the Wilier 0 SLR. The result is a top-of-the-range, aerodynamic frame that complements our pure ascent bike used by Astana Pro Team and Total Direct Energie.

FILANTE^{SLR}



AERODYNAMIC

Filante SLR was designed to maximise aerodynamic performance in real environmental conditions.

The design was based on data recorded in the wind tunnel (where the wind is very clean for homogeneous empirical results) while also taking the real world into account.

In this way, we not only evaluate typical wind tunnel data (yaw angles from -20° to $+20^\circ$), but also consider environmental turbulence that impacts the bike for many different reasons. That's why we redesigned the profiles, starting with the standard NACA airfoils/ KAMM tail that no longer have sharp edges on the back.

The softened angles improve performance even when the air flow is disturbed.

The inside of the front fork has been widened by 7 mm, making it 13.6% wider than the Cento10PRO. In doing so, we moved the fork blades away from the wheel, reducing turbulence and improving aerodynamics



HANDLEBAR AND INTEGRATED CABLES

In addition to being lightweight, (350 grams for the 101x42 size) the new integrated carbon monocoque Filante Bar handlebar houses the brake and derailleur cables, directing them toward the inside of the frame.

Its design is very simple, with sinuous and rounded lines for maximum grip ergonomics.



FILANTE^{SLR}**LIGHTWEIGHT AND RESPONSIVE**

The new aerodynamically optimised profiles helped us eliminate extra weight in the frame's construction. The shape has no sharp edges, therefore requires less material and less resin in the corners. This improves homogeneity of the inside, reducing the frame's weight to a mere 870 grams.

The assembled bike with top-of-the-range specifications weighs 6.8 kg.

The Filante monocoque handlebar is made of the same carbon we use for the Wilier 0 SLR. Thanks to the different types of carbon we used in combination with the Liquid-Crystal Polymer, the unique fibre positioning and the construction technology, we have reached an absolute level of lightness and stiffness.

The lower overall weight compared to the exceptional stiffness increases STW by 12.5%.

This improvement is clearly felt with the steering precision and the feeling of safety at high speeds.

FILANTE^{SLR}

COLOR	VELVET RED
FINISH	GLOSSY
COLOR CODE	F1



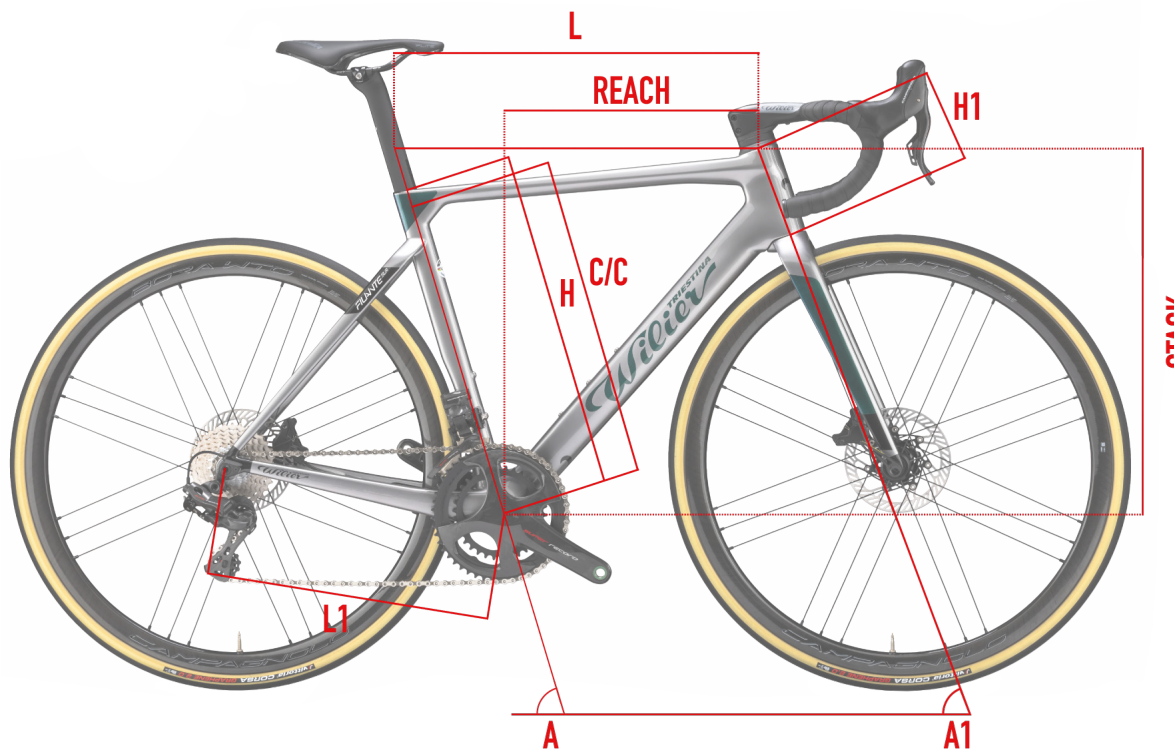
COLOR	BLACK RED
FINISH	MATT
COLOR CODE	F2



FILIANTE^{SLR}

COLOR	GREY IRIDE GREEN
FINISH	GLOSSY
COLOR CODE	F3



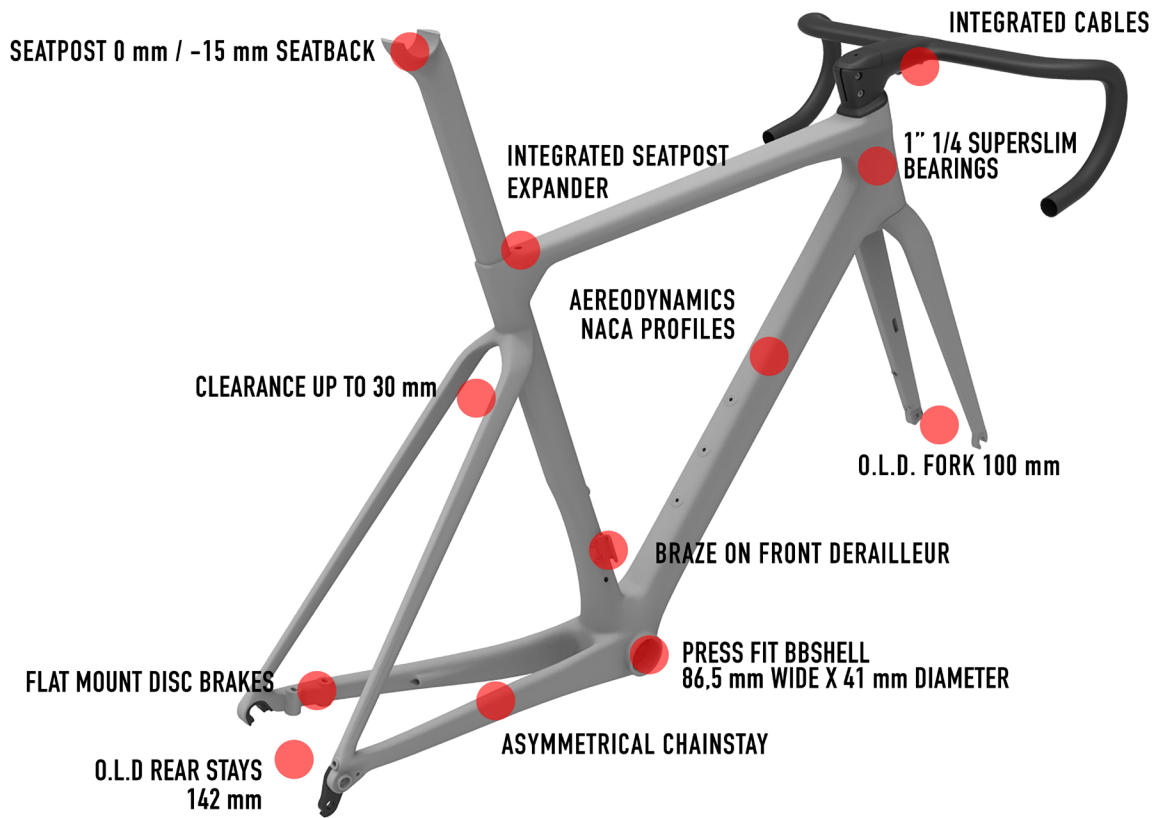
GEOMETRIES AND SIZES


	C/C	L	H	A	H1	L1	A1	REACH	STACK	WHEELBASE
SIZE	[cm]	[cm]	[cm]	[°]	[cm]	[cm]	[°]	[mm]	[mm]	[mm]
XS	43,2	51,5	45	75,2	10,4	40,7	70,8	380	505	981
S	46,2	53	48	74,5	11,9	40,7	72	384	521	984
M	48,2	54,3	50	74	13,5	40,8	72,5	388	538	990
L	50,2	55,6	52	73,5	15,4	41	73	391	555	997
XL	52,2	57	54	73	16,6	41,1	73	395	571	1002
XXL	54,2	58,3	56	72,5	18,1	41,1	73,5	399	587	1006



FILIANTE^{SLR}

KEYPOINTS



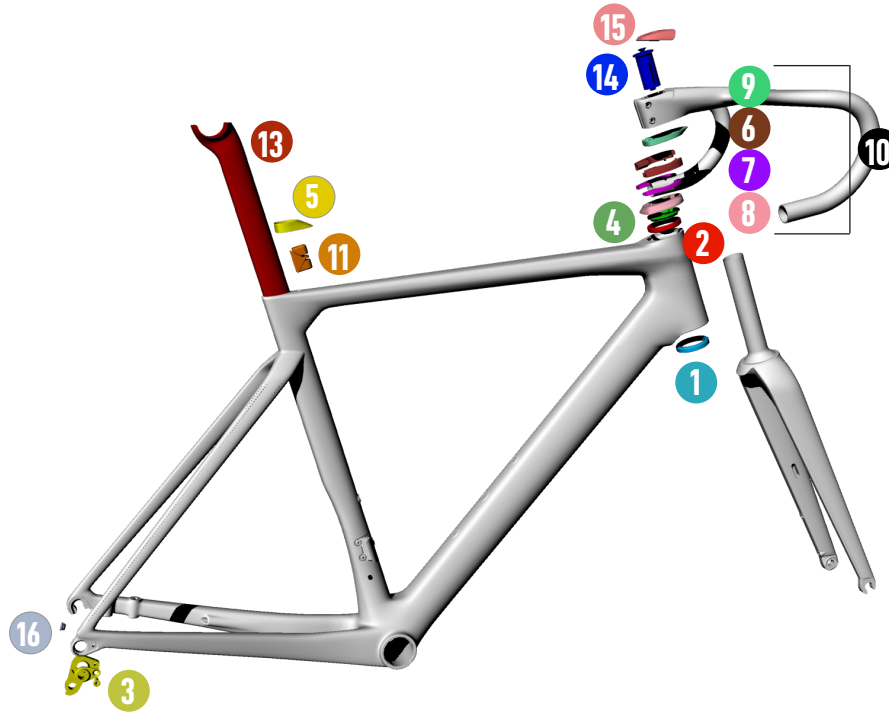
FRAME AND TECHNICAL SPECS DETAILS - DISC VERSION

HEADTUBE	1"1/4 - 1"1/4
UPPER BEARING	WTP-BEARING-SS 39 X 46.9
LOWER BEARING	FSA MR137
FRONT FORK O.L.D.	100 mm - MAVIC SPEED RELEASE 12 X 100
REAR STAYS O.L.D.	142 mm - MAVIC SPEED RELEASE 12 X 142
BB SHELL	SHIMANO PRESS FIT (86.5 wide x 41 diameter)
SEAT POST	WILIER SEATPOST 0/-15
FRONT DERAILLEUR TYPE	BRAZED ON
SEATPOST EXPANDER	WTP-SPEXP



FILANTE^{SLR}

SPARE PARTS



SPARE PARTS B2B CODES

1	MR137	FSA BEARING
2	WTP-BEARING-SSLIM	SUPER SLIM BEARING
3	WORDROP	REAR DROPOUT
4	WTP-COMPRING-SS	COMPRESSION RING FOR SUPER SLIM BEARING
5	WTP-SPSHIELD-F	RUBBER PLUG - SEATPOST
6	WTP-ZSPACER10	10mm SPACER
7	WTP-ZSPACER5	5mm SPACER
8	W0TC	TOP COVER
9	W0TS	TOP SPACER
10	W0KITS	SPACERS KIT
11	WTP-SPEXP	SEATPOST EXPANDER
12	STFILA0	FILANTE SEATPOST 00OFFSET
13	STFILA-15	FILANTE SEATPOST -15OFFSET
14	EXROUFG	EXPANDER FOR ROUNDED FORK
15	WFBTC	TOP CAP FILANTE BAR
16	CCN009-1	RUBBER PLUG REAR STAY DI2
17	LV2720100	MAVIC SPEED RELEASE FRONT
18	LV2720200	MAVIC SPEED RELEASE REAR
19	LV3300100	MAVIC SPEED RELEASE W/O LEVER FRONT
20	LV3300200	MAVIC SPEED RELEASE W/O LEVER REAR



FAQ

What are the main differences between Filante SLR and Wilier 0 SLR?

Both bikes are perfect for professional use. Wilier 0 SLR is agile, very lightweight, responsive, perfect for climbing. Filante SLR, with a frame weighing 100 grams more than the Wilier 0 SLR, is even more stable and aerodynamic, perfect for rouleurs and sprinters.

How much does the frame weigh?

The frame weighs 870 grams for a painted size M.

What transmissions can be installed on the Filante SLR?

SLR Filante is intended for professionals. For this reason, the bike can only be equipped with electronic shifting and disc brakes.

What tires can be installed on the Filante SLR?

The standard bicycle is fitted with 28 mm tires. The frame can accommodate tires with a maximum of 30 mm of actual width.

What type of stem/handlebar can I install on Filante SLR?

The standard bicycle is fitted with Filante Bar, available in five different sizes. With Wilier Triestina carbon spacers, O-Bar, J-Bar, Stemma and Stemma SL can also be installed.

Why do the handlebar stems have non-traditional lengths?

The handlebar stems have been optimized to have more real fitting coverage. In this way, 240 accufit points without overlapping allow every rider to find the perfect position on the Filante SLR.

Do the integrated cables pass through the handlebar?

The cables are integrated inside the frame, running through the superthin bearing and inside the integrated handlebar.

Is the superthin bearing available as a spare part?

Yes. The upper superthin bearing is not normally available on the market but is a design owned by Wilier Triestina and will only be available in Wilier Triestina B2B in the spare parts section.

What are the sizes of the thru axle system?

The frame design is Speed Release. The bike comes standard with a specific Mavic Speed Release thru axle system.



